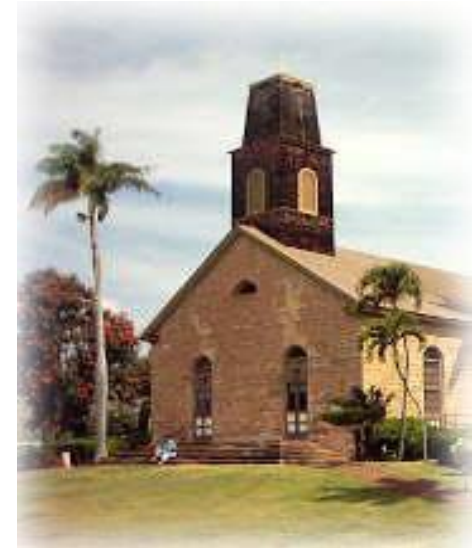


# Congregation Disaster Preparedness



# UCC Disaster Ministries

Has been a formal, national ministry of the United Church of Christ since 2001. UCC Disaster Ministries exists wherever and however members of the United Church of Christ show up to care for their neighbors in the aftermath of a natural or technologically-made disaster, in both the short and long-term.



Hurricane

Tsunami

Flood

Earthquake

Volcano

Wildfire

Drought

Landslide

Erosion

# Mission Statement of UCC Disaster Ministries

“Responding to the call of our Christ-centered faith, UCC Disaster Ministries supports holistic community recovery worldwide, by engaging supporters, volunteers and partners to focus on **preparedness, emergency relief and long-term recovery.**”



Hurricane

Tsunami

Flood

Earthquake

Volcano

Wildfire

Drought

Landslide

Erosion



# ***Carry one another's burdens, and in this way you will fulfill the law of Christ. Galatians 6:2.***

In his Letter to the Galatians, Paul helps them to understand the historical and theological background for the crisis they are facing and spells out specific responsibilities for those who are led by the Spirit so that they can rebuild their broken lives.



# Clergy Responsibilities



# Emergency Preparedness



# Individual Preparedness

The plan of organizing the HCUCC churches to be prepared, is to start with the “GO” bag program for individual church members which is a bag/kit that is ready to be taken during an evacuation to a shelter or safe place.



Hurricane

Tsunami

Flood

Earthquake

Volcano

Wildfire

Drought

Landslide

Erosion



# 72-HOUR SURVIVAL KIT

Stay alert and keep these items ready this rainy season



EVERYWHERE

## WHISTLE

It's bad enough that you don't have a signal on your mobile phone but worse when you run out of battery. When you're in distress and need to draw attention to yourself, having a whistle can help rescuers spot you.

## BOTTLED WATER

You can survive without food but not without water: it's the most important thing on your list and should be the first thing you pack in your survival kit. Prepare at least 3 liters of water that's good for 3 days.

## CELLPHONE

If you're stranded in the middle of nowhere and you need to call for help, your mobile phone will do. Just make sure your battery is always full. So hold off on playing Candy Crush for now, your ticket request can wait.

## BATTERY-OPERATED RADIO

Keep up-to-date with what's going on in the news, listen for updates and monitor events following a disaster. Ignoring evacuation instructions could spell the difference between life and death.

## READY-TO-EAT FOOD

Food is vital for your survival. Just make sure you pack foods that will last at least 3-7 days. Packaged non-perishable or canned food and boxed juices are best.

## CLOTHES

When it rains, it pours! When you get wet, make sure you have dry clothes to quickly change into. You can't afford to get sick and in times like these, the threat of disease spreading is extremely high.

## FLASHLIGHT

When electricity is out, don't be left in the dark. A handy flashlight will be your best guide as you rummage through the darkness.

## IMPORTANT DOCUMENTS

When you need to thread on high waters, it's a good idea to keep your important documents in a waterproof-container or resealable plastic bag.

## FIRST AID KIT

Whatever the weather is, you should have a first aid kit with you at all times. Just remember, your best defense is a good offense.

## EMERGENCY MONEY

ATM offline? Always make sure you have cash on hand just in case you'll need to buy extra supplies.

TEXT BY: RALPH ABOGADO  
GRAPHICS BY: MICA CRUZ







# Emergency Kit

## Visual Checklist for Disaster Supplies

 Water	 Food	 Prescription Medications	 First Aid Kit	 Baby Supplies	 Pet Supplies	 Bleach & Eye-dropper
 Mylar Blanket	 Blankets	 Sleeping Bag	 Glasses & Eye Protection	 Extra Clothing	 Personal Hygiene	 Towelettes
 Towels	 Sanitation	 Plastic Sheeting	 Tube Tent	 Backpack	 Dust Mask	 Work Gloves
 Flashlight	 Batteries	 Matches	 Candles	 Lightsticks	 Knife	 Multi-purpose Tool
 Wrench, Pliers, Crowbar	 Rope / Cord	 Duct Tape	 Can Opener	 Kitchen Items	 Scissors	 Fire Extinguisher
 Compass	 Pen & Paper	 Radio	 Cell Phone & Charger	 Whistle	 Signal Mirror	 2-way Radios
 Emergency Guide/Plan	 Family Documents	 Maps	 Camera	 Games & Books	 Extra Keys	 Cash, Travelers Checks, Coins

### References



American Red Cross  
[www.redcross.org](http://www.redcross.org)



Ready  
[www.ready.gov](http://www.ready.gov)



Federal Emergency Management Agency  
[www.fema.gov](http://www.fema.gov)



Letter or Note of Love & Hope

You may need to survive on your own after an emergency. This means having your own food, water, and other supplies in sufficient quantity to last for at least three days. Local officials and relief workers will be on the scene after a disaster, but they cannot reach everyone immediately. You could get help in hours, or it might take days. In addition, basic services such as electricity, gas, water, sewage treatment, and telephones may be cut off for days, or even a week or longer.

Ready America

1. Get a kit
2. Make a plan
3. Be informed

Checklist prepared with guidance from Craig Baldwin, Tracy Burt, Abigail Cermak, Michelle Gregory, Hideohiko Kanegai PhD, Andy Parish, Lisa Peffer, Mark Shrivastava PhD, June Stephens, Tomoko Sugitani and Bob Weil.

Spring 2011



Emergency Comfort Kit Guide  
[www.stepsplanning.com/comfort\\_kit.pdf](http://www.stepsplanning.com/comfort_kit.pdf)



Steps Planning & Design

# Large Zip Lock Bag

## Important Documents

It is important to periodically review/update/organize your documents. This helps you to be better prepared in case of an emergency or disaster. Be sure to make photocopies of your important documents and leave the originals in a bank safe, home safe that is secured to the floor or the wall, or with close relatives. Photocopies of the documents should be placed into a Ziploc bag or other waterproof container to protect them from water and dirt, and should be brought with you in the event of an evacuation.

Important documents may include:

- State Identification card or Driver's License (to be carried with you at all times)



- Credit / Debit card number(s)



- Bank account information (It may be worthwhile to set up automatic deposit of any checks and payments you receive. Post disaster postal service may have difficulty getting paper checks to you if roads have not been cleared or are not safe. The U.S. Department of Treasury recommends direct deposit (<http://www.godirect.org>) into checking accounts or the Direct Express Debit Master Card.)



- Medical insurance; Medicare; Medicaid cards (carry originals with you at all times.)



- Last Will and Testament; Advance Directive



- Title/Deeds to property/home



- Prescriptions for medications, hearing aids and/or glasses.

## VALUABLES

Also be sure that valuables are stored away in a safe deposit box or kept with trusted individuals. Sentimental items should also be brought with you to the shelter in a water-proof carrier. Please keep in mind that what you bring to a shelter must be carried by you and that you will only have a limited amount of space at the shelter.



# Emergency Preparedness



# Congregation Preparedness

- Organize a team
- Initial assessment
- Congregation plan
- Get training
- Build resources
- Do drills and exercises
- Your church in the community



# Congregation Preparedness

Has your church actually prepared a disaster response plan to respond to:

- An emergency involving your own members, congregation, or facilities?
- Open your church up to the community after a major disaster?





# Your Congregation Plan

- Initial assessment.
- Promote awareness among your congregation.
- Preparedness for key staff.
- Training, training, training.
- Recommended course of action.
- Evacuation process & assembly point(s).
- Post-incident counseling process.
- Media protocol.
- Considerations for armed security.



Hurricane

Tsunami

Flood

Earthquake

Volcano

Wildfire

Drought

Landslide

Erosion

# Initial Assessment

## Factors to consider:

- Size and layout of facility.
- Size of the congregation.
- Lockdown capability.
- Number of exits.
- Location of children's ministry or other programs.
- Unarmed or armed security & state laws.
- Pre-established emergency response protocols.
- Training for congregation, staff, & security.
- Communication methods.
- Police/medical response time.



Hurricane

Tsunami

Flood

Earthquake

Volcano

Wildfire

Drought

Landslide

Erosion

# Congregation Active Threat Plan

- Organize your team.
  - Parking attendants
  - Greeters
  - Safety team
- Practice your plan.
  - Communications
  - Entry
  - Supplies/equipment



Hurricane

Tsunami

Flood

Earthquake

Volcano

Wildfire

Drought

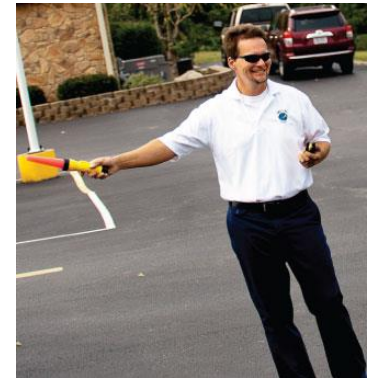
Landslide

Erosion



# Prepare Key Staff

- Leadership –
- Parking -
- Greeters -
- Ushers -
- Children's ministry staff -
- Youth/adult ministry staff -
- Volunteers who play critical roles -



Hurricane

Tsunami

Flood

Earthquake

Volcano

Wildfire

Drought

Landslide

Erosion

# Promoting Congregation Awareness

- Be proactive about engaging your congregation.
- Larger congregations may consider promoting awareness with everyone or by groups.
- Smaller congregation could address their congregation as a whole.
- Via newsletters/brochures/social media.



# OTHER CONSIDERATIONS:

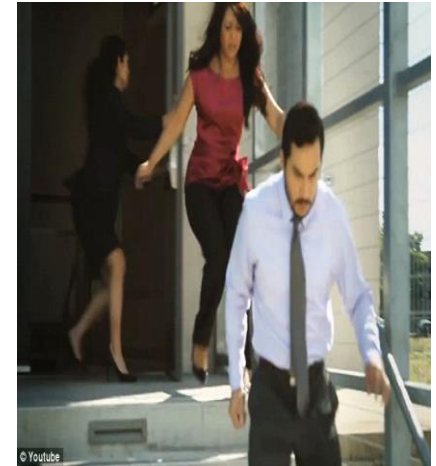
- Advanced first aid training for key staff .
- Have multiple exit point at sanctuary/event centers.
- Make sure exit signs are installed.
- Maintain staff presence inside the lobby during service.
- Consider monitoring the parking lot.
- Invest in a low cost camera system.



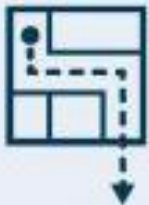


# RUN!

- Have an escape route in mind.
- Get out at the first sign of danger.
- Leave belongings behind.
- Take others with you if possible.
- Try to prevent others from entering.



RUN



HAVE AN ESCAPE PLAN



EVACUATE



LEAVE YOUR BELONGINGS



HELP OTHERS  
IF POSSIBLE



DO NOT MOVE  
WOUNDED PEOPLE

# HIDE!

- Determine a place that won't trap you.
- Hide behind heavy objects.
- Darken the room.
- Do not leave your safe hiding spot until law enforcement gives the "All Clear".



**HIDE**



BE OUT FROM  
SHOOTER'S VIEW



LOCK DOORS  
AND BLOCK THEM WITH FURNITURE



KEEP YOUR OPTIONS  
FOR MOVEMENT



SILENCE PHONE



BE QUIET

# FIGHT

- To save your life you may need to attack the invader:
  - ✓ Act as aggressively as possible!
  - ✓ An attack by a group is more effective than by a single person.
- Close the distance.
- Throw items (e.g. hymnals, chairs, etc.)



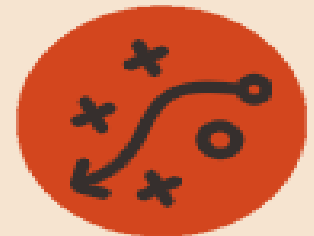
## FIGHT



Fight **ONLY** as a  
LAST RESORT



Act aggressively  
and throw objects



Have a  
back-up plan

# COVID-19

The Centers for Disease Control (CDC) believes at this time that symptoms of COVID - 19 may appear on average in 10 days, but in as few as 2 days or as long as 14 days after exposure.

Typical coronaviruses most commonly spread from an infected person to others mainly via respiratory droplets produced when an infected person coughs or sneezes.

There is currently no vaccine to prevent COVID - 19 infection. Practice frequent hand washing and use of hand sanitizer. Avoid touching eyes, nose and mouth. Avoid close contact with people who are sick and avoid crowds and/or cramped situations.

Total US tested – 414    Confirmed cases - 14



Hurricane

Tsunami

Flood

Earthquake

Volcano

Wildfire

Drought

Landslide

Erosion

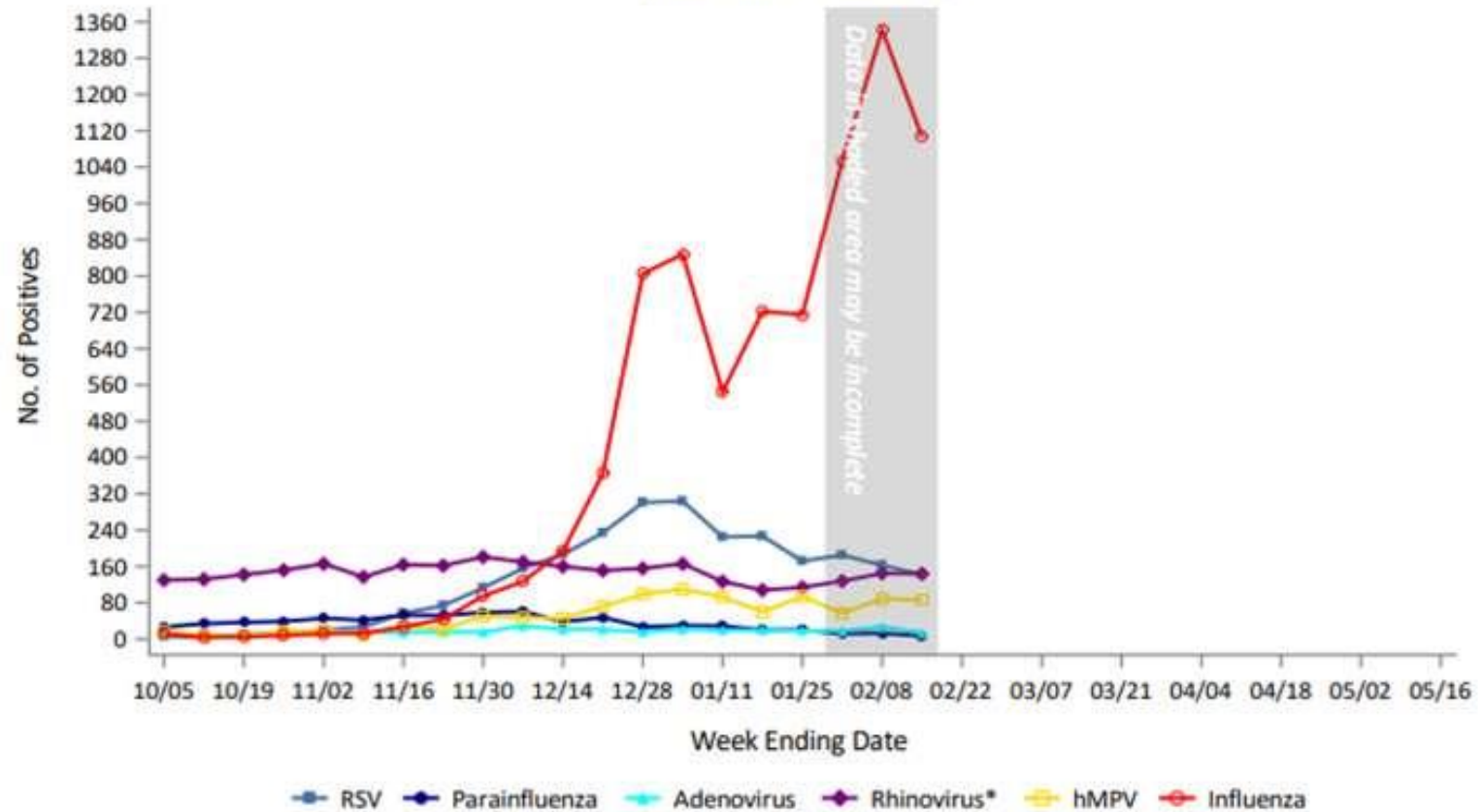


# Influenza

- ATLANTA (Gray News) Updated February 21
- The CDC estimates so far this season there have been at least 29 million flu illnesses, 280,000 hospitalizations and 16,000 deaths from flu.
- This flu season has been especially bad so far for children and young adults. Their rates remain higher than in recent years.
- A total of 105 influenza-associated deaths in children have been reported so far this season. That's an increase of 13 since last week's report.



Positive Respiratory Virus Test Results by Week  
(Data source: NC DETECT)



\*Most facilities use tests that do not distinguish rhinoviruses from enteroviruses.



Hurricane



Tsunami



Flood



Earthquake



Volcano



Wildfire



Drought



Landslide



Erosion

# Other Topics

- Individual and family preparedness
- Natural disasters
- Active shooter
- Church in the community
- First aid
- Community Point of Distribution (CPOD)
- Other



Hurricane



Tsunami



Flood



Earthquake



Volcano



Wildfire



Drought



Landslide



Erosion

# Takeaway?

